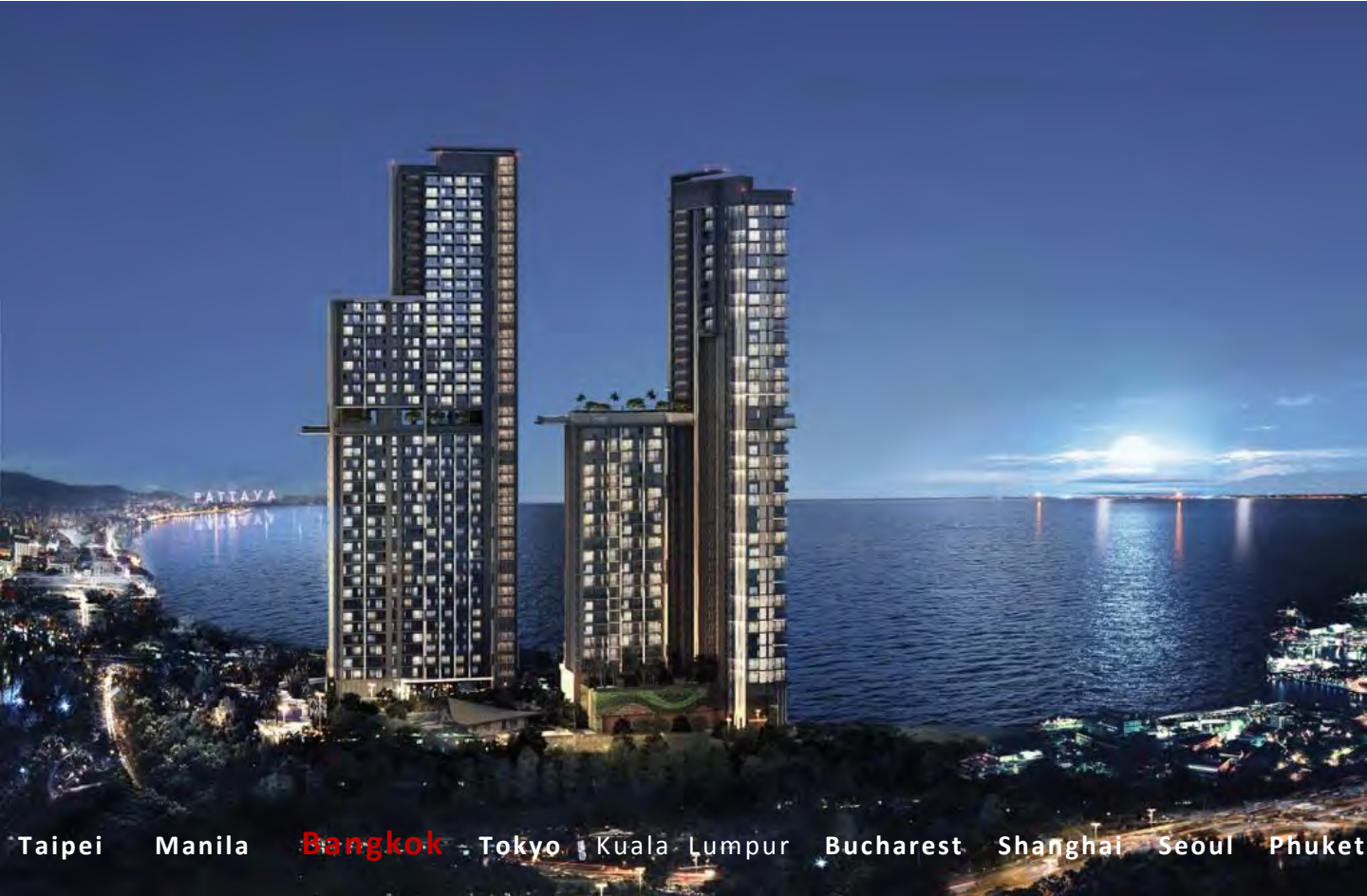


StevenLeach

Partners in creative solutions



Taipei Manila **Bangkok** Tokyo Kuala Lumpur Bucharest Shanghai Seoul Phuket

THE RIVIERA

Pattaya, a popular tourist escape and second most visited city in Thailand, has undergone a vast transformation in recent years. As one of Asia's largest beach resort cities, Pattaya has seen a period of sustained investment allowing for rapid growth in the city's real estate market. SL+A Bangkok presents its latest contribution to the constantly evolving skyline of the area in the form of our latest luxury architectural design – The Riviera, Wongamat Beach.

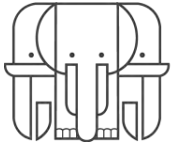
The development, located at Pattaya's most prestigious address and a leisurely two-minute walk to Wongamat beach, consists of twin high-rise towers and is equipped with extensive facilities including infinity pools, fitness suites and sky lounges. The Riviera provides an affordable but high quality environment for people to live in, creating a luxurious home away from home.

February 2014 Issue

Our Services:

- Interior Design Consultancy,
- Feasibility and Strategic Space Studies,
- Project Management,
- Environment as Brand: Brand Application to Interiors,
- Sustainability Advisers, based on USGBC's LEED Accreditation
- Architectural

www.sla-group.com



StevenLeach

Partners in creative solutions

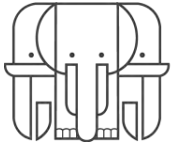


In order to appeal to the needs of their potential market, The Riviera Group developed the concept of “Glamorous Lifestyle, Ocean Dreams” to complement the brilliant simplicity of their main theme, “The Riviera”. From this concept, SL+A Bangkok was able to create a design which would not only allow The Riviera to reflect a stylish and vibrant lifestyle but also to give the residents access to the best facilities available in the city.



The design embraces the ideals of luxury and nature, creating a fusion that connotes both glamour and sophistication rivaling and possibly surpassing the concept’s better known French cousin. At the same time, the location of the development facilitates the throwing in of ‘paradise’ into the growing pot of superlatives this concept has already been dubbed. The façades of both towers imitate the refraction of light as the waves of the sea gently ripple in the shallows and echo the smooth dancing movements of the calm, morning ocean. The twin towers themselves, separated down the middle by a lagoon inspired swimming-pool complex, consist of a modern design supplementing the notion of a lavish oasis removed from the everyday hustle and bustle of the city.

The project is currently at the submission stage for an Environmental Impact Assessment and construction is set to commence towards the end of this year. SL+A Bangkok looks forward to adding this development to its already impressive portfolio of luxury designs that define the area’s skyline.



StevenLeach

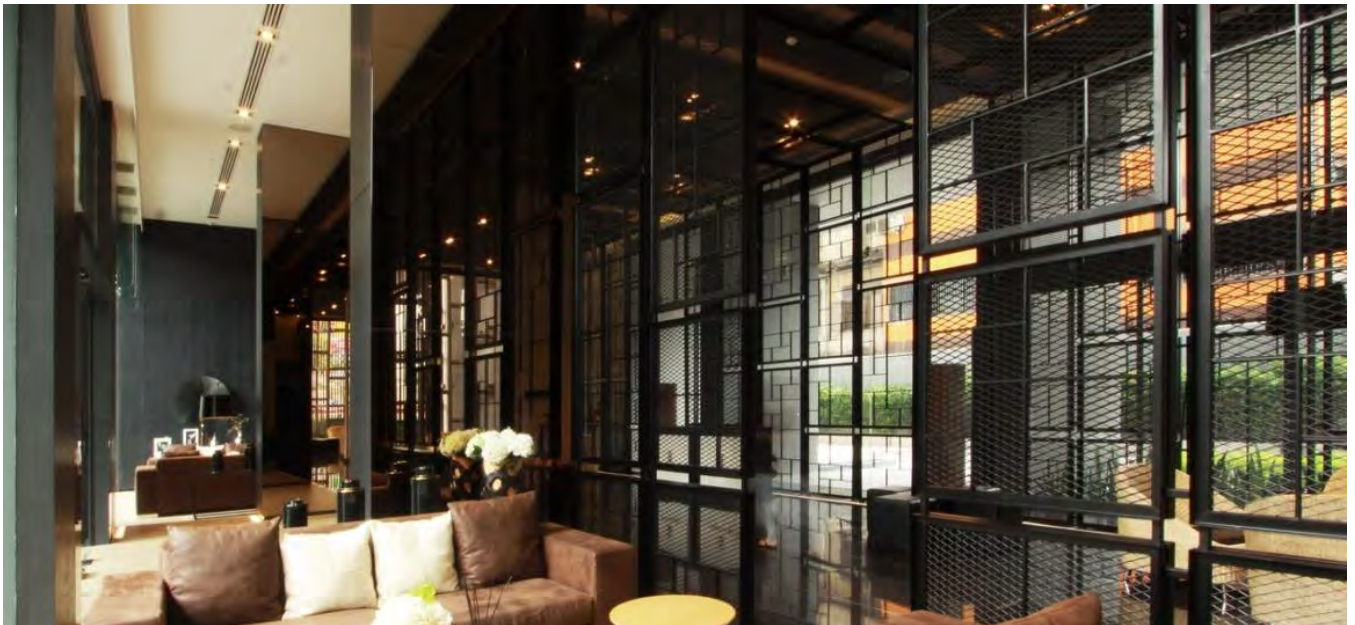
Partners in creative solutions

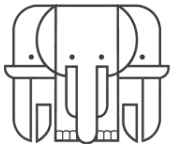


SANSIRI ONYX

In a predominantly low-rise area of northern Bangkok, Sansiri's 26 Floor Onyx development shines like a beacon of modern design pulling its environs into the 21st century.

Located a stone's throw away from the Saphankwai Skytrain (BTS) Station, Sansiri's Onyx is positioned in a convenient location just far enough from the town centre to escape the grind of downtown Bangkok.





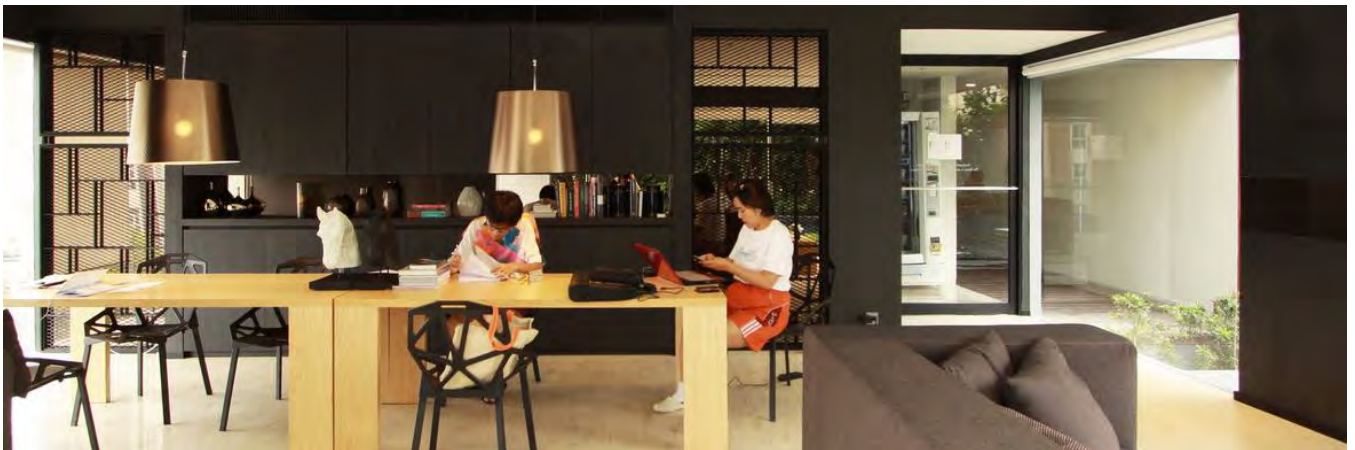
StevenLeach

Partners in creative solutions

If a peaceful escape was the aim, then the design certainly delivers, everything about this development exudes sophistication and tranquillity. From the Japanese tatami inspired façade introduced to the architects by SL+A Bangkok, to the serene pebble gardens within the building itself, the project exudes the look and feel of walking into a contemporary Japanese house, with a luxurious twist. The design produced by SL+A Bangkok utilizes the physical space to produce something which can only be described as frightfully elegant. Everything from the contrasts of different intensities of light to our modern take on traditional Japanese furniture is used to highlight the colour scheme of dark onyx and vibrant teal provided by Sansiri, the Developers. In this design, nothing is made to simply just fit; everything is included to feature.

With our team designing the common areas and public facilities for the project, these high profile spaces transformed into the main features of this upscale condominium project. So much so that they quite possibly even upstage other features, including a multi-level garden on the upper floors dubbed, the 'Sky Pathway' along with a 50m long infinity pool, both of which enjoy a tantalising view.

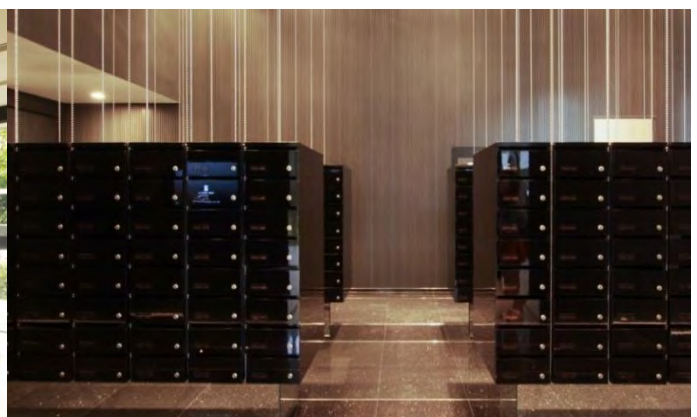
Having finished construction towards the end of last year, Sansiri's Onyx is preparing to fill up fast as potential residents are quickly seeing the development for what it really is: a conveniently positioned and spectacularly designed gem to the north of an ever expanding city.



Library



Fitness Center



Mail Room